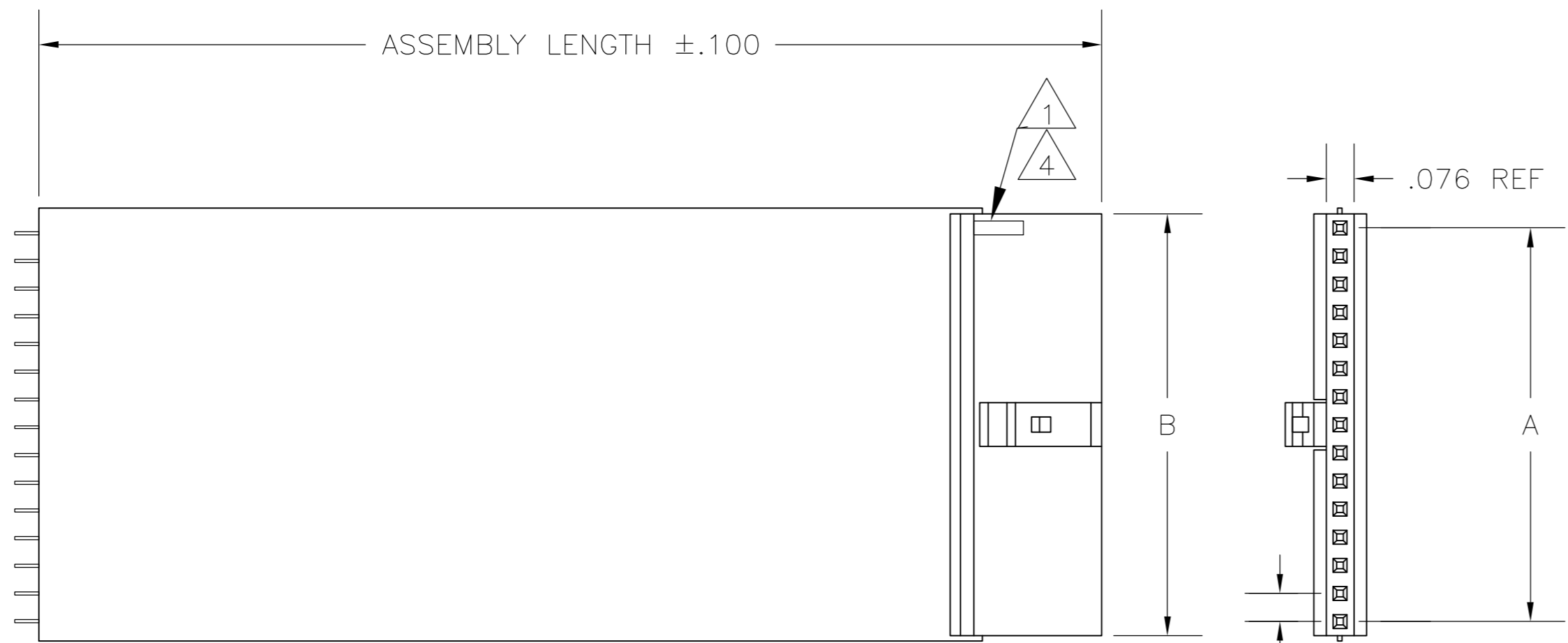
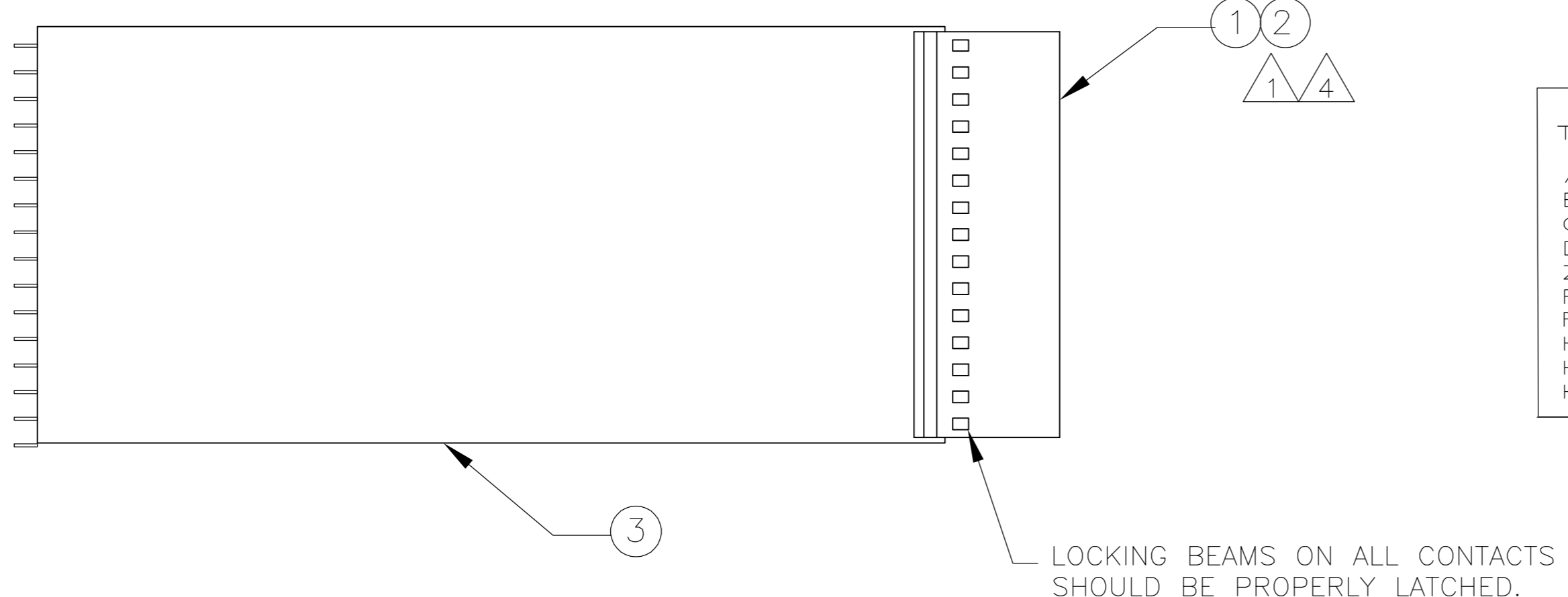
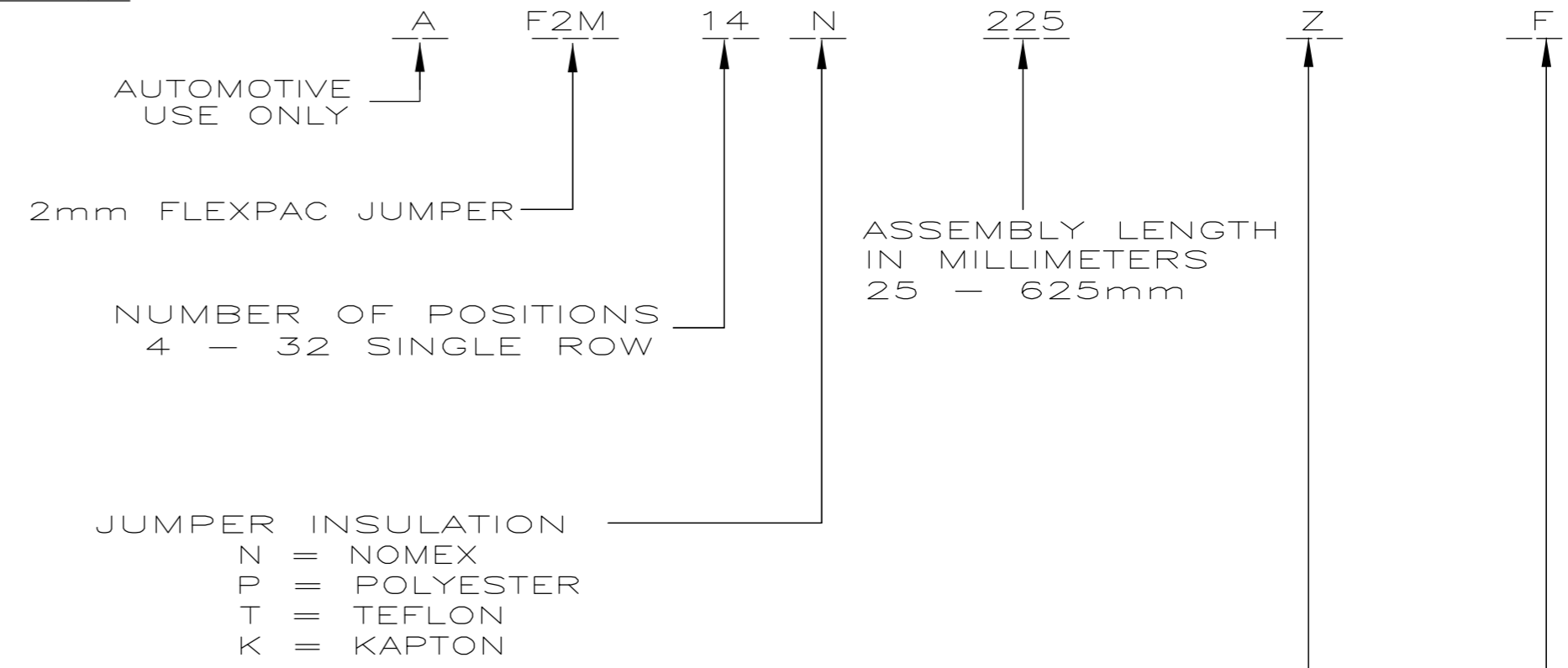
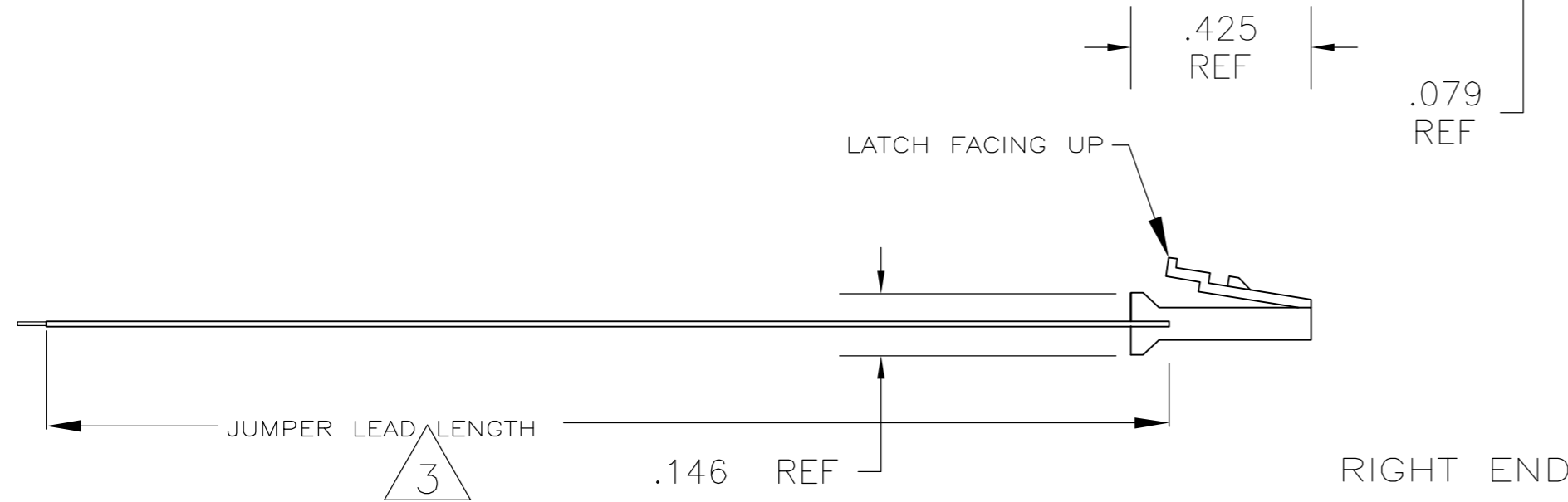


THIS DRAWING IS UNPUBLISHED. RELEASED FOR PUBLICATION
 © COPYRIGHT BY TYCO ELECTRONICS CORPORATION. ALL RIGHTS RESERVED.

LOC		DIST		REVISIONS			
GP	00	P	LTR	DESCRIPTION	DATE	DWN	APVD
		B		REVISE PER 06-020416 ECO	06/SEP/06	ECC	FDM



- 1 CONTACT TO BE TERMINATED ONTO CONDUCTOR. CONDUCTOR PREPPED TO .090±.020 LENGTH.
- 2 REF 1474339
- 3 JUMPER LENGTH TO BE:
ASSEMBLY LENGTH - .31 FOR ONE HOUSING.
ASSEMBLY - .64 FOR TWO HOUSINGS.
- 4 CRIMP HEIGHT TO BE .023±.002 INCH.
- 5. PRODUCT AND PROCESSING MUST MEET REQUIREMENTS OF TYCO ELECTRONICS STANDARD 230-702.



TERMINATION STYLE	LEFT END	RIGHT END
A = FLEXSTRIP 'A' BEND		
B = FLEXSTRIP 'B' BEND		
C = FLEXSTRIP 'C' BEND		
D = FLEXSTRIP 'D' BEND		
Z = FLEXSTRIP 'Z' BEND		
F = 2mm FLEXPAC single row tin plated contacts		
F1 = 2mm FLEXPAC single row tin plated contacts latch up		
H = 2mm FLEXPAC single row gold plated contacts		
H1 = 2mm FLEXPAC single row gold plated contacts latch up		
H2 = 2mm FLEXPAC single row gold plated contacts latch down		

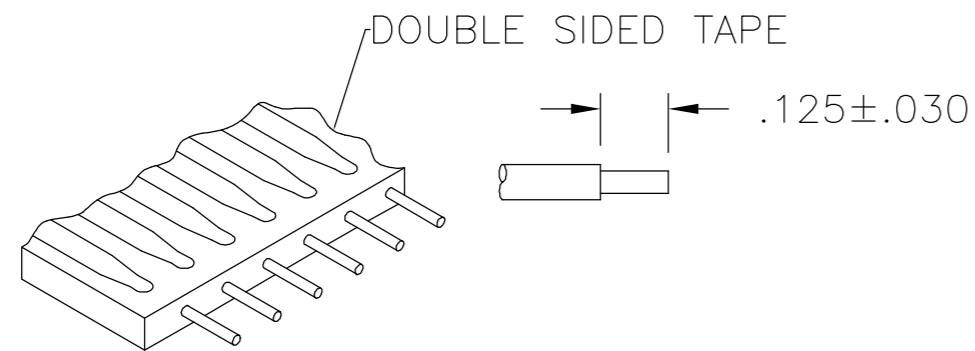
FSX-7X-X JUMPER	3
CONTACTS	2
HOUSING	1
DESCRIPTION	ITEM

WAS T&B DRAWING NUMBER 1400519

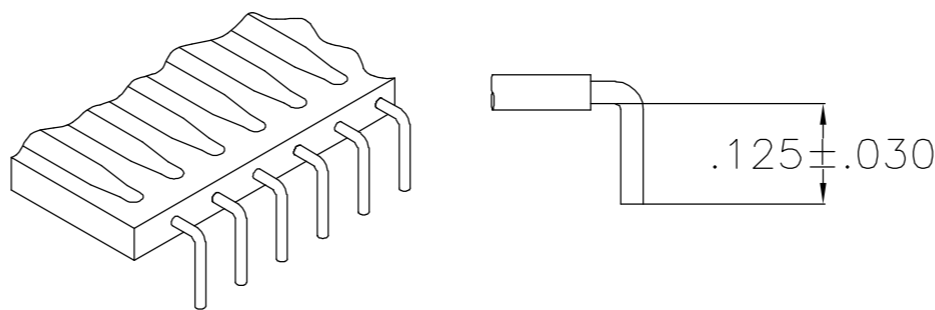
THIS DRAWING IS A CONTROLLED DOCUMENT.		DWN 24/MAR/03 E.C. CLAYBAUGH	Tyco Electronics Corporation Harrisburg, PA 17105	
DIMENSIONS: INCHES		CHK 24/MAR/03 F.D. McCORKEL		
TOLERANCES UNLESS OTHERWISE SPECIFIED:		APVD 02/MAY/06 F.D. McCORKEL	NAME	
0 PLC ± -		PRODUCT SPEC	FLEXPAC ASSEMBLY, GENERIC, 2mm, SINGLE ROW, FEMALE	
1 PLC ± -		APPLICATION SPEC	SIZE	RESTRICTED TO
2 PLC ± -			A2	
3 PLC ± -			CAGE CODE	
4 PLC ± -			00779	
ANGLES ± -			DRAWING NO	
FINISH		WEIGHT	C=1474523	
		CUSTOMER DRAWING	SCALE	
			N.T.S.	
			SHEET	
			1 of 2	
			REV	
			B	

THIS DRAWING IS UNPUBLISHED. RELEASED FOR PUBLICATION
 © COPYRIGHT BY TYCO ELECTRONICS CORPORATION. ALL RIGHTS RESERVED.

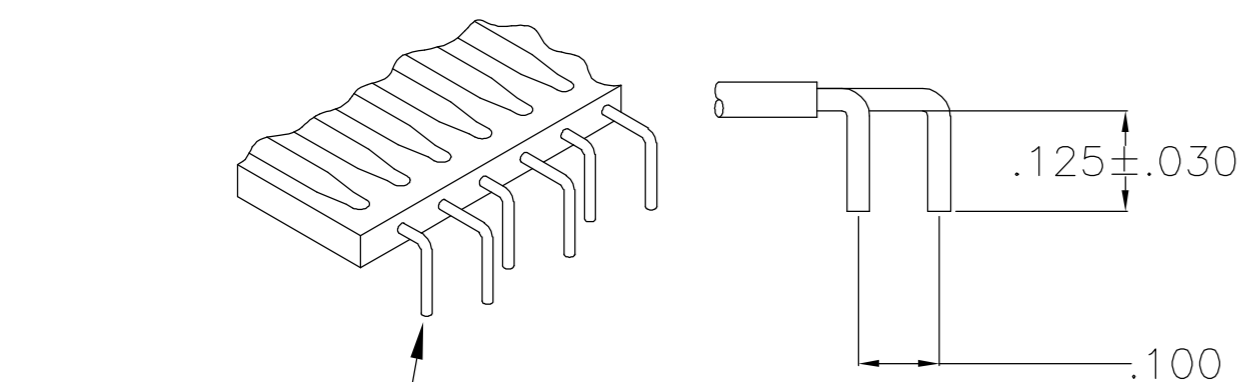
LOC	DIST	REVISIONS					
GP	00	P	LTR	DESCRIPTION	DATE	DWN	APVD
		-		SEE SHEET 1	-	-	-



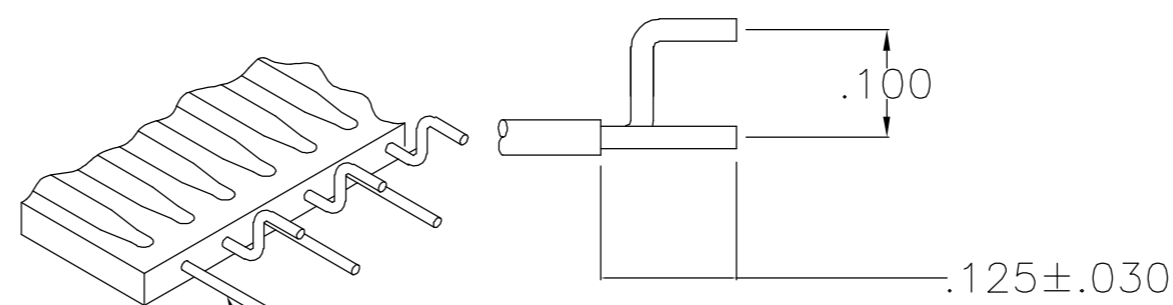
A BEND



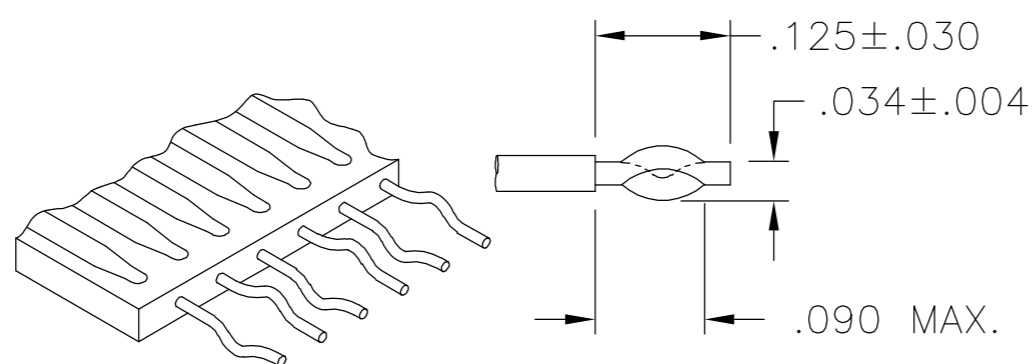
B BEND
PINS DOWN
RIGHT ANGLED



C BEND
RIGHT ANGLED
STAGGERED PINS DOWN
PIN 1 SHORT
RIGHT ANGLED



D BEND
STRAIGHT/STAGGERED
PINS UP
PIN 1 STRAIGHT



Z BEND

POSN	DIMENSIONS	
	"A"	"B"
4	.236 (6.0)	.310 (7.9)
5	.315 (8.0)	.389 (9.9)
6	.394 (10.0)	.468 (11.9)
7	.472 (12.0)	.546 (13.9)
8	.551 (14.0)	.625 (15.9)
9	.630 (16.0)	.704 (17.9)
10	.708 (18.0)	.782 (19.9)
11	.787 (20.0)	.861 (21.9)
12	.866 (22.0)	.940 (23.9)
13	.944 (24.0)	1.018 (25.9)
14	1.023 (26.0)	1.176 (27.9)
15	1.102 (28.0)	1.176 (29.9)
16	1.181 (30.0)	1.253 (31.9)
17	1.259 (32.0)	1.333 (33.9)
18	1.338 (34.0)	1.412 (35.9)
19	1.417 (36.0)	1.491 (37.9)
20	1.495 (38.0)	1.569 (39.9)
21	1.574 (40.0)	1.648 (41.9)
22	1.653 (42.0)	1.727 (43.9)
23	1.731 (44.0)	1.805 (45.9)
24	1.810 (46.0)	1.884 (47.9)
25	1.888 (48.0)	1.962 (49.9)
26	1.968 (50.0)	2.042 (51.9)
27	2.046 (52.0)	2.120 (53.9)
28	2.125 (54.0)	2.200 (55.9)
29	2.204 (56.0)	2.278 (57.9)
30	2.282 (58.0)	2.358 (59.9)
31	2.361 (60.0)	2.435 (61.9)
32	2.440 (62.0)	2.514 (63.9)

THIS DRAWING IS A CONTROLLED DOCUMENT.		DWN E.C. CLAYBAUGH 24/MAR/03	Tyco Electronics Corporation Harrisburg, PA 17105	
DIMENSIONS: INCHES		CHK F.D. McCORKEL 24/MAR/03	NAME FLEXPAC ASSEMBLY, GENERIC, 2mm, SINGLE ROW, FEMALE	
TOLERANCES UNLESS OTHERWISE SPECIFIED:		APVD F.D. McCORKEL 02/MAY/06	PRODUCT SPEC	RESTRICTED TO
0 PLC ± - 1 PLC ± - 2 PLC ± - 3 PLC ± - 4 PLC ± - ANGLES ± - FINISH -		APPLICATION SPEC	SIZE A2	CAGE CODE 00779
MATERIAL		WEIGHT	DRAWING NO 1474523	SCALE N.T.S.
		CUSTOMER DRAWING	SHEET 2 of 2	REV B